

PWWF

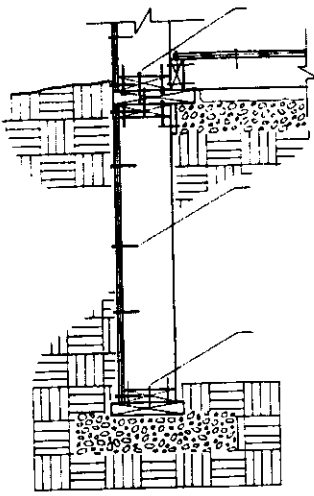
**The Permanent Wood Foundation System:
Economical, Durable and Energy Efficient.**

www.act54.com



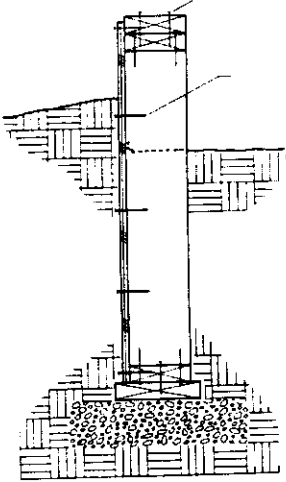
INSPECTIONS

Nailing Checklist



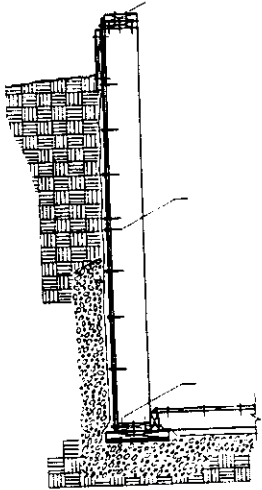
Sub Wall:

- Bottom plate nailed to footing plate = 1 #16d hdg nail per stud space.
- Bottom plate nailed to stud = 2 #16d hdg nails.
- Sub wall top plate nailed to stud = 2 #16d s.s. nails.
- Upper footing plate nailed to sub wall top plate = 1 #16d s.s. nail 16" o.c.
- Basement wall bottom plate nailed to foundation footing plate = 1 #16d s.s. stud space.
- Foundation basement bottom plate nailed to stud = 2 #16d s.s. nails.
- 1 x 4 freeze board nailed to sub top plate = 1 #8d hdg nail 16" o.c.
- Sub wall plywood nailed to sub wall studs = #8d s.s. nails.



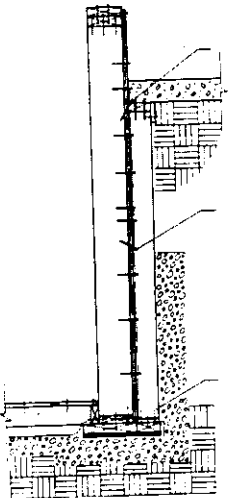
Crawl Space Wall:

- Bottom plate nailed to footing plate = 2 #16d hdg nails.
- Bottom plate nailed to stud = 2 #16d hdg nails.
- Top plate nailed to stud = 2 #16d hdg nails.
- Upper top plate nailed to top plate = 2 #16d hdg nails 16" o.c.
- Crawl Space plywood nailed to wall studs = #8d s.s. nails.
- Nails for Crawl Space plywood 8" above grade or higher = #8d hdg nails.



Basement Wall:

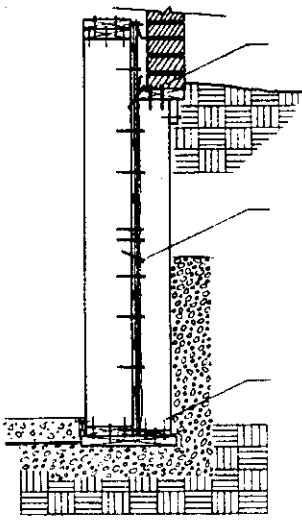
- Footing plate nailed to plywood stiffener (when required) = 2 #8d hdg nails 16" o.c.
- Bottom plate nailed to footing plate = 1 #16d hdg nail per stud space.
- Bottom plate nailed to wall stud = 2 #16d hdg nails.
- Top plate nailed to wall stud = 2 #16d hdg nails (see design).
- Upper top plate nailed to top plate = 2 #16d hdg nails 16" o.c. (see design).
- Wall plywood nailed to wall studs = #8d or #10d s.s. nails (see design).
- Nails for wall plywood 8" above grade or higher = #8d or #10d hdg nails (see design).
- Plywood wall blocking when required nailed to studs = 2 #16d hdg nails per end.



Knee Wall Support For Slab:

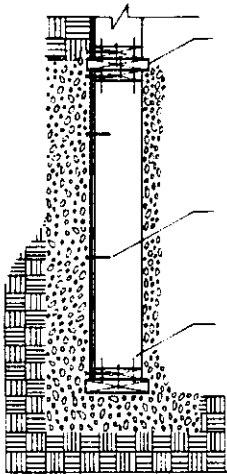
- 1 x 4 bottom plate nailed to footing plate = 1 #8d s.s. nail per stud space.
- 1 x 4 bottom plate nailed to knee wall studs = 2 #8d s.s. nails.
- Toenail at 4 ft. height (upward toe nail) = 1 #8d s.s. nail per stud.
- Top plate nailed to knee wall stud = 2 #16d s.s. nails per stud.
- Top plate toenail into foundation wall = 1 #16d s.s. nail into wall stud.
- 1 x 4 freeze board nailed to top plate = 1 #8d s.s. nail 16" o.c.

Fasteners used in preservative treated wood shall be corrosion resistant.
(Hot Dip Galvanized - hdg) and (Stainless Steel - s.s.).



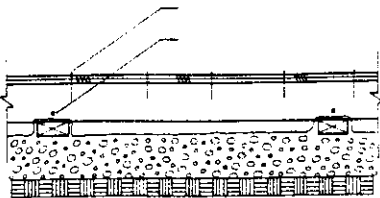
Knee Wall Support For Brick:

- 1 x 4 bottom plate nailed to footing plate = 1 #8d s.s. nail per stud space.
- 1 x 4 bottom plate nailed to knee wall studs = 2 #8d s.s. nails.
- Toenail at 4 ft. height (upward toe nail) = 1 #8d s.s. nail per stud.
- Top plate nailed to knee wall stud = 2 #16 s.s. nails per stud.
- Upper top plate when required nailed to top plate = 2 #16d s.s. nails 16" o.c.
- 2 x 6 top plate toenail into foundation wall = 1 #16d s.s. nail into wall stud.
- 1 x4 freeze board nailed to top of stud under top plate = 1 #8d s.s. nail per stud.



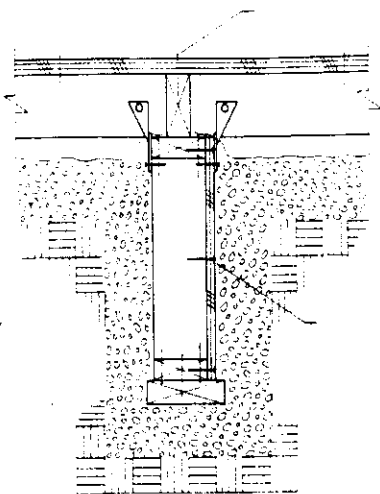
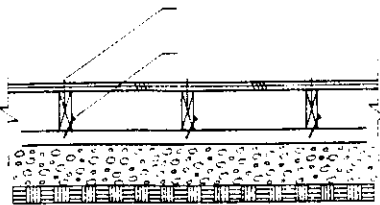
Step Footing (Lead Wall):

- Bottom plate nailed to footing plate = 2 #16d hdg nails per stud space.
- Bottom plate nailed to stud = 2 #16d hdg nails.
- Top plate nailed to stud = 2 #16d hdg nails per stud.
- Foundation footing plate nailed to knee wall = 2 #16d hdg nails per stud space.
- Knee wall plywood sheathing nailed to stud = #8d s.s. nails.
- Back fill lead wall with pea stone or crush stone as shown.



Wood Basement Floor System:

- Toenail joist to sleeper with one nail per joint = 1 #8d s.s. toenail.
- Joist and floor blocking framing nails = 2 #16d hdg nails per joint.
- Plywood treated flooring nailed to treated floor joist = #8d hdg nails.
- Rim, Ban, Bond or End Joist nailed to foundation wall = #16d hdg nails.



Tie Down Anchor Wall:

- Bottom plate nailed to footing plate = 1 #16d hdg nail per stud space.
- Bottom plate nailed to wall stud = 2 #16d hdg nails.
- Top plate nailed to wall stud = 2 #16d hdg nails.
- Plywood nailed to wall studs = #8d s.s. nails.
- Framing anchors nailed to wall below poly = 1 #8d s.s. nail per anchor.
- Framing anchors nailed to joists above poly = 1 #8d hdg nail per anchor.

Fasteners used in preservative treated wood shall be corrosion resistant.
(Hot Dip Galvanized – hdg) and (Stainless Steel – s.s.).

**Handling Precautions
For Preservative-Treated Wood**

- **Dispose of treated wood by ordinary trash collection or burial. Treated wood should not be burned in open fires or fireplace.**
- **Avoid frequent or prolonged inhalation of sawdust from treated wood. When sawing and machining treated wood, wear a dust mask. Whenever possible, these operation should be perform outdoors to avoid indoor accumulations of airborne sawdust from treated wood.**
- **When power sawing and machining, wear goggles to protect eyes from flying particles.**
- **Wash thoroughly after skin contact, especially before eating, drinking or use of tobacco products.**
- **If preservatives or sawdust accumulates on clothes, launder before reuse. Wash work clothes separately.**

Caution: Arsenic is in the pesticide applied to some types of treated wood. Never burn treated wood, wear dust mask and goggles when cutting or sanding wood, wear gloves when working with wood.

**Ask for the consumer safety information sheet or call 1-800-282-0600.
www.ccasafetyinfo.com**

Act54.com

**For more information about Permanent
Wood Foundations go to the official
web site on wood foundations:**

810-232-5099

The panel use recommendations contained in this publication are based on years of research and comprehensive field experience. However, quality of workmanship and the conditions under which panel products are used vary widely. Act54.com has no control over there elements; it cannot accept responsibility for panel performance or designs as actually constructed.